



Country Club Bioretention Garden

Country Club Avenue & Blondo Street, Omaha, NE

City of Omaha Stormwater Program & CSO Program



SITE AND PROJECT SUMMARY

This project was a part of the larger Country Club Area Combined Sewer Separation Project. In addition to separating sanitary and storm sewer lines within the Country Club neighborhood a bioretention garden was incorporated into an existing landscape bed at the intersection of Blondo Street, Country Club Ave, and North 51st Street.

The main goals for the project and bioretention garden were to not only limit the amount of runoff reaching the combined sewer system, but also provide an aesthetically pleasing amenity to the surrounding community. Emphasis was placed on using a variety of native and well adapted plants within the bioretention garden. Plants were selected to provide color during the spring in conjunction with summer and fall blooming perennials producing variations in color throughout the entire growing season. Having a variety of plants not only provides unique textures and colors within the bioretention garden, but makes them visually appealing which is important for their long-term utilization and the neighborhood.

An important aspect of public acceptance involves community support. The Country Club Community Council (CCCC) is a neighborhood association that jumped behind the project. Not only will this neighborhood association play a role in long-term maintenance, but they will also help educate others in the neighborhood about bioretention gardens, rain gardens, and stormwater management.



PROJECT DETAILS

	BIORETENTION SYSTEM
System Footprint	1,945 ft ²
Underdrain	4" Perforated PVC
Pre-Treatment System	Curb Cuts w/ Scour Stop
Outlet Control	Water Level Control Structure w/ Bar Grate Lid
Contributing Area	0.5 acres
Predominant Land Use	Residential
Percent Impervious (%)	38%
Predominant Soil Types	Native: Classic Urban Complex, Silty Clay Growing Media: 50/50 Sand/Compost

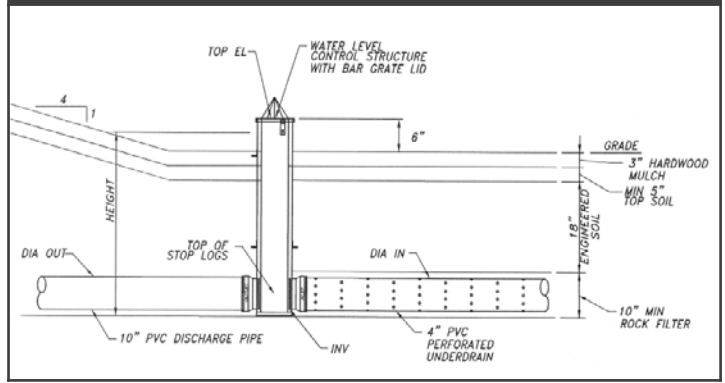


DESIGNED BY	CONSTRUCTED BY	MONITORING/ ASSESSMENT BY	MAINTENANCE BY
City of Omaha Public Works – Design Division	Community ReDesigned	City of Omaha Stormwater Program	City of Omaha Stormwater Program

SITE LOCATION – Country Club Ave & Blondo St



WATER LEVEL CONTROL STRUCTURE



PHOTOS



PROJECT LAYOUT

